

BIRSTALL SECTIONAL CONCRETE GARAGES (Area 1)

AREA 1



2024 Price List For Delivery & Assembly to the following UK Postcodes:
LE Leicestershire, **NG** Nottinghamshire **CV** Coventry & **DE** Derbyshire
 And: **BB, BD, BL, CH, CV, CW, DE, DH, DL, DN, FY, HD, HG, HU, HX, L, LE, LA**
LE, LN, LS, M, NG, OL, PR, S, SK, SR, ST, TS, WA, WF, WN, WS, YO



Garage Prices Include: Multi-Spa Stone Finish, 2 Pane Fixed Window
 Delivery, up & over door(s) VAT & **FREE ASSEMBLY**

Shop Online

www.birstall.com

| SINGLE PENT GARAGES | STANDARD PENT ROOF | Width→ | 8' 5" | 9' 5" | 10' 5" | 12' 5" | 14' 5" | |
|---------------------|-------------------------------|----------------|--|--|--|--|--|---------------|
| | | Length↓ | 2.57m | 2.87m | 3.17m | 3.78m | 4.39m | |
| | | Door(s) Inc. | 1 x 7' wide <i>Standard</i> Canopy up & over | 1 x 8' wide <i>Standard</i> Canopy up & over | 1 x 8' wide <i>Standard</i> Canopy up & over | 1 x 8' wide <i>Standard</i> Canopy up & over | 1 x 8' wide <i>Standard</i> Canopy up & over | |
| | | Window(s) Inc. | 1 x 4' Fixed | 1 x 4' Fixed | 1 x 4' Fixed | 1 x 4' Fixed | 1 x 4' Fixed | |
| | | 14' 3" | 4.34m | £2,129 | £2,439 | £2,599 | £3,139 | £3,369 |
| | | 16' 3" | 4.95m | £2,219 | £2,529 | £2,719 | £3,269 | £3,509 |
| | | 18' 3" | 5.56m | £2,369 | £2,649 | £2,799 | £3,339 | £3,609 |
| | | 20' 3" | 6.17m | £2,699 | £2,909 | £3,069 | £3,609 | £3,859 |
| | | 22' 3" | 6.78m | £2,869 | £3,119 | £3,229 | £3,749 | £4,019 |
| | | 24' 3" | 7.39m | £2,969 | £3,199 | £3,339 | £3,829 | £4,139 |
| | Rear Guttering £8 Per Foot | | | | | | | |

| DOUBLE PENT GARAGES | 16' 5" | 18' 5" | 20' 5" | 22' 5" | 24' 5" | | | | | |
|---------------------|---------------|---------------|---------------|--------------|--------------|--|--|--|--|--|
| | | | | | | 5.00m | 5.61m | 6.22m | 6.83m | 7.44m |
| | | | | | | 2 x 7' wide <i>Standard</i> Canopy up & over | 2 x 8' wide <i>Standard</i> Canopy up & over | 2 x 8' wide <i>Standard</i> Canopy up & over | 2 x 8' wide <i>Standard</i> Canopy up & over | 2 x 8' wide <i>Standard</i> Canopy up & over |
| | 2 x 4' Fixed | 2 x 4' Fixed | 2 x 4' Fixed | 2 x 4' Fixed | 2 x 4' Fixed | | | | | |
| | £4,109 | £4,519 | £4,749 | n/a | n/a | | | | | |
| | £4,279 | £4,699 | £4,939 | n/a | n/a | | | | | |
| | £4,349 | £4,959 | £5,239 | n/a | n/a | | | | | |
| | £4,789 | £5,209 | £5,469 | n/a | n/a | | | | | |
| | £5,029 | £5,459 | £5,709 | n/a | n/a | | | | | |
| | £5,269 | £5,709 | £5,979 | n/a | n/a | | | | | |

| SINGLE APEX GARAGES | STANDARD APEX ROOF | Width→ | 8' 5" | 9' 5" | 10' 5" | 12' 5" | 14' 5" | |
|---------------------|-------------------------------|-----------------|--|--|--|--|--|---------------|
| | | Length↓ | 2.57m | 2.87m | 3.17m | 3.78m | 4.39m | |
| | | Door(s) Inc. | 1 x 7' wide <i>Standard</i> Canopy up & over | 1 x 8' wide <i>Standard</i> Canopy up & over | 1 x 8' wide <i>Standard</i> Canopy up & over | 1 x 8' wide <i>Standard</i> Canopy up & over | 1 x 8' wide <i>Standard</i> Canopy up & over | |
| | | Window(s) Inc. | 1 x 4' Fixed | 1 x 4' Fixed | 1 x 4' Fixed | 1 x 4' Fixed | 1 x 4' Fixed | |
| | | 14' 3" | 4.34m | £2,289 | £2,609 | £2,799 | £3,379 | £3,629 |
| | | 16' 3" | 4.95m | £2,379 | £2,719 | £2,949 | £3,529 | £3,799 |
| | | 18' 3" | 5.56m | £2,549 | £2,849 | £3,009 | £3,599 | £3,899 |
| | | 20' 3" | 6.17m | £2,769 | £3,139 | £3,309 | £3,909 | £4,189 |
| | | 22' 3" | 6.78m | £3,099 | £3,359 | £3,499 | £4,069 | £4,369 |
| | | 24' 3" | 7.39m | £3,219 | £3,469 | £3,619 | £4,149 | £4,529 |
| | Side Guttering £8 Per Foot | | | | | | | |
| | | Extra 2' length | | + £220 | + £230 | + £240 | + £265 | + £285 |

| DOUBLE APEX GARAGES | 16' 5" | 18' 5" | 20' 5" | uPVC Fascias Pent or Apex | | | |
|---------------------|---------------|---------------|---------------|--|--|--|--|
| | | | | 5.00m | 5.61m | 6.22m | |
| | | | | 2 x 7' wide <i>Standard</i> Canopy up & over | 2 x 8' wide <i>Standard</i> Canopy up & over | 2 x 8' wide <i>Standard</i> Canopy up & over | |
| | 2 x 4' Fixed | 2 x 4' Fixed | 2 x 4' Fixed | 8' Wide | £470 | | |
| | £4,419 | £4,829 | £5,089 | 9' Wide | £475 | | |
| | £4,609 | £5,029 | £5,299 | 10' Wide | £480 | | |
| | £4,889 | £5,329 | £5,639 | 12' Wide | £485 | | |
| | £5,179 | £5,619 | £5,889 | 14' Wide | £490 | | |
| | £5,439 | £5,879 | £6,159 | 16' Wide | £585 | | |
| | £5,709 | £6,149 | £6,449 | 18' Wide | £590 | | |
| | + £300 | + £340 | + £370 | 20' Wide | £595 | | |



Battery Garages



Double Garage With 2 Doors (larger doors available)

| SIDE DOORS | Timber Personal Door | 2' Wide (2' 6" Frame) | £295 |
|------------|---|-----------------------|-------------|
| | Timber Personal Door extra wide (Double Door) | 3' 6" Wide (4' Frame) | £565 |
| | Steel Personal Door for extra security | 2' 8" Wide (3' Frame) | £390 |
| | Steel Personal Door for extra security | 3' 8" Wide (4' Frame) | £775 |

| BRICK FRONT | BRICK FRONT Option (Red or Buff) | | |
|--------------|----------------------------------|-------------|-------------|
| | Garage Width | | |
| | 8' 5" & 9' 5" | Brick Front | £239 |
| | 10' 5" | Brick Front | £269 |
| | 16' 5" & 18' 5" | Brick Front | £349 |
| 19' & 20' 5" | Brick Front | £399 | |

| UP & OVER DOOR UPGRADES | 7' wide Georgian canopy door | £245 |
|--|--|---------------|
| | 7' wide Standard framed & retractable door | POA |
| | 8' wide Standard framed & retractable door (Garages 9' 6" wide+) | POA |
| | 8' wide Georgian canopy door (Garages 9' 6" wide+) | £310 |
| | 9' wide Standard retractable door (Garages 10' 6" wide+) | £850 |
| | 9' wide Georgian canopy door (Garages 10' 6" wide+) | POA |
| | 10' wide Standard framed & retractable door (Garages 12' 6" wide+) | £1,500 |
| | 10' wide Georgian framed & retractable door (Garages 12' 6" wide+) | POA |
| | 12' wide Standard framed & retractable door (Garages 14' 6" wide+) | POA |
| | 12' wide Georgian framed & retractable door (Garages 14' 6" wide+) | POA |
| | 14' wide Standard framed & retractable door (Garages 16' 6" wide+) | POA |
| | 14' wide Georgian framed & retractable door (Garages 16' 6" wide+) | POA |
| | Additional Standard canopy door to the rear (Apex only) (7' wide door) | £450 |
| | Additional Standard canopy door to the rear (Apex only) (8' wide door) | £500 |
| Offset door (moving up & over door to extreme left or right) | £40 | |
| Exchange up & over door for timber personal door (workshop) | FREE | |
| Exchange up & over door for steel personal door (workshop) | £100 | |

| EXTRA HEIGHT for 4 x 4s & Taller Vehicles | EXTRA HIGH PENT or APEX | |
|--|---|--------------------|
| | 7' High To Eaves | Garage +15% |
| | 6' 6" Concrete Panels + 6" Timber Skirt Inc 7' Tall Timber doors with 7' high clearance or 7' Tall up & over door(s) with 6' 8" clearance | |
| | 7' 6" High To Eaves | Garage +25% |
| Constructed with 6' 6" High Concrete Panels Plus 12" of Timber skirting on top Inc 7' 6" Tall Timber doors with 7' 6" high clearance or 7' 6" Tall up & over door(s) with 7' 2" clearance | | |
| 8' High To Eaves | Garage + 50% | |
| Constructed with 6' 6" High Concrete Panels Plus 18" of Timber skirting on top Inc 8' Tall Timber doors with 8' high clearance or 8' wide x 8' tall up & over 7' 8" clear | | |
| | £ 300 | |

| EXTRAS | Extra fixed two-pane Timber window (4' x 2') | £90 |
|--------|--|-------------|
| | uPVC fixed two-pane window (4' x 2') | £310 |
| | Fitted PVC guttering & fallpipe per foot | £8 |
| | Translucent roof sheets (each) | £50 |

| AUTOMATIC | REMOTE ELECTRIC DOOR SYSTEMS | |
|-----------|--|-------------|
| | For framed & retractable doors only | |
| | For self assembly (supplied with remote) | |
| | For 7' to 14' wide doors | £500 |

GARAGE BASES must be flat, level & square. 6" longer & 6" wider than external sizes stated above

BIRSTALL SECTIONAL CONCRETE GARAGES (Area 1)



2024 Price List For Delivery & Assembly to the following UK Postcodes:
 LE Leicestershire, NG Nottinghamshire CV Coventry & DE Derbyshire
 And: BB, BD, BL, CH, CV, CW, DE, DH, DL, DN, FY, HD, HG, HU, HX, L, LE, LA
 LE, LN, LS, M, NG, OL, PR, S, SK, SR, ST, TS, WA, WF, WN, WS, YO

Garage Prices Include: Multi-Spa Stone Finish, 2 Pane Fixed Window

Delivery, up & over door(s) VAT & FREE ASSEMBLY

Shop Online

www.birstall.com

SALE

AREA 1



SINGLE PENT GARAGES

SINGLE APEX GARAGES

DOORS

UP & OVER DOOR UPGRADES

EXTRAS

ULTIMATE PENT ROOF



Prices Include:
 Brick Front
 PVCu Fascias
 PVCu Window
 Steel Side Door
 Std Roof Sheets

| Width→ Length↓ | 8' 5" | 9' 5" | 10' 5" | 12' 0" | 14' 5" |
|-----------------------|------------------|------------------|------------------|------------------|-----------------------|
| | 2.57m | 2.87m | 3.17m | 3.66m | 4.39m |
| Door(s) Inc. | 1 x 7' wide | 1 x 8' wide | 1 x 8' wide | 1 x 8' wide | 1 x 10' wide |
| | <i>Standard</i> | <i>Standard</i> | <i>Standard</i> | <i>Standard</i> | <i>Standard</i> |
| | Canopy up & over | Canopy up & over | Canopy up & over | Canopy up & over | Retractable up & over |
| Window(s) Inc. | 1 x 4' Fixed | 1 x 4' Fixed | 1 x 4' Fixed | 1 x 4' Fixed | 1 x 4' Fixed |
| 14' 3" | 4.27m | £3,329 | £3,639 | £3,889 | £4,519 |
| 16' 3" | 4.88m | £3,409 | £3,919 | £4,119 | £4,629 |
| 18' 3" | 5.59m | £3,709 | £4,049 | £4,229 | £4,819 |
| 20' 3" | 6.10m | £4,069 | £4,299 | £4,489 | £5,079 |
| 22' 3" | 6.71m | £4,219 | £4,419 | £4,589 | £5,259 |
| 24' 3" | 7.32m | £4,339 | £4,589 | £4,759 | £5,419 |

| DOUBLE PENT GARAGES | 16' 5" | 18' 5" | 20' 5" | 22' 5" | 24' 5" |
|---------------------|------------------|------------------|------------------|------------------|------------------|
| | 5.00m | 5.61m | 6.22m | 6.83m | 7.44m |
| | 2 x 7' wide | 2 x 8' wide | 2 x 8' wide | 2 x 8' wide | 2 x 9' wide |
| | <i>Standard</i> | <i>Standard</i> | <i>Standard</i> | <i>Standard</i> | <i>Standard</i> |
| | Canopy up & over | Canopy up & over | Canopy up & over | Canopy up & over | Canopy up & over |
| | 2 x 4' Fixed | 2 x 4' Fixed | 2 x 4' Fixed | 2 x 4' Fixed | 2 x 4' Fixed |
| | £5,629 | £6,399 | £6,989 | n/a | n/a |
| | £6,129 | £6,799 | £7,139 | n/a | n/a |
| | £6,539 | £7,139 | £7,429 | n/a | n/a |
| | £6,879 | £7,409 | £7,699 | n/a | n/a |
| | £7,199 | £7,669 | £7,969 | n/a | n/a |
| | £7,499 | £7,969 | £8,439 | n/a | n/a |

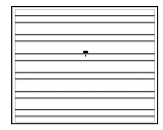
ULTIMATE APEX ROOF



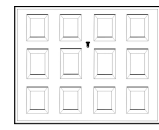
Prices Include:
 Brick Front
 PVCu Fascias
 PVCu Window
 Steel Side Door
 Red Roof Sheets
 12.5° Pitch

| Width→ Length↓ | 8' 5" | 9' 5" | 10' 5" | 12' 0" | 14' 5" |
|-----------------------|------------------|------------------|------------------|------------------|-----------------------|
| | 2.57m | 2.87m | 3.17m | 3.66m | 4.39m |
| Door(s) Inc. | 1 x 7' wide | 1 x 8' wide | 1 x 8' wide | 1 x 8' wide | 1 x 10' wide |
| | <i>Georgian</i> | <i>Georgian</i> | <i>Georgian</i> | <i>Georgian</i> | <i>Georgian</i> |
| | Canopy up & over | Canopy up & over | Canopy up & over | Canopy up & over | Retractable up & over |
| Window(s) Inc. | 1 x 4' Fixed | 1 x 4' Fixed | 1 x 4' Fixed | 1 x 4' Fixed | 1 x 4' Fixed |
| 14' 3" | 4.27m | £3,589 | £4,039 | £4,299 | £4,939 |
| 16' 3" | 4.88m | £3,859 | £4,299 | £4,569 | £5,019 |
| 18' 3" | 5.59m | £4,059 | £4,399 | £4,659 | £5,199 |
| 20' 3" | 6.10m | £4,179 | £4,609 | £4,799 | £5,469 |
| 22' 3" | 6.71m | £4,569 | £4,749 | £5,019 | £5,739 |
| 24' 3" | 7.32m | £4,659 | £4,939 | £5,299 | £5,919 |
| Extra 2' length | | + £200 | + £220 | + £230 | + £250 |

| DOUBLE APEX GARAGES | 16' 5" | 18' 5" | 20' 5" |
|---------------------|------------------|------------------|------------------|
| | 5.00m | 5.61m | 6.22m |
| | 2 x 7' wide | 2 x 8' wide | 2 x 8' wide |
| | <i>Georgian</i> | <i>Georgian</i> | <i>Georgian</i> |
| | Canopy up & over | Canopy up & over | Canopy up & over |
| | 2 x 4' Fixed | 2 x 4' Fixed | 2 x 4' Fixed |
| | £5,919 | £6,739 | £7,359 |
| | £6,369 | £7,139 | £7,569 |
| | £6,729 | £7,499 | £7,839 |
| | £7,179 | £7,719 | £8,079 |
| | £7,719 | £7,989 | £8,449 |
| | £7,949 | £8,349 | £8,669 |
| | + £280 | + £330 | + £350 |



Standard Door
Included with Pent



Georgian Door
Included with Apex



Steel Side Door
Included



Real Brick Front
Included



Double Glazed PVCu
Window(s) Included



Ultimate Double Apex
Shown as Standard

| | | |
|---------------------------------------|-----------------------|------|
| Steel Personal Door | 2' 6" Wide (3' Frame) | FREE |
| Upgrade to wider personal door | | |
| Steel Personal Door (Extra Wide) | 3' 6" Wide (4' Frame) | £275 |

The ULTIMATE range of garages include
 Stylish headboards, side fascia boards
 4' double glazed fixed window(s) gutters & fallpipe
 all made from the finest quality white
Maintenance Free PVCu
 Genuine Brick pillars to the front and a
 Steel personal door are all included as standard
Ultimate Pent Roof Garages
 Have standard Grey Cement Fibre roofing sheets
 and Standard up & over door(s)
Ultimate Apex Roof Garages
 Have Spanish Red roofing sheets & Ridge
 and include Georgian up & over door(s)
10 YEAR STRUCTURAL GUARANTEE on all models
 Please note slightly different width from our std. range

| | |
|--|--------|
| 7' wide Georgian canopy door | £245 |
| 7' wide Standard framed & retractable door | POA |
| 8' wide Standard framed & retractable door (Garages 9' 6" wide+) | POA |
| 8' wide Georgian canopy door (Garages 9' 6" wide+) | £310 |
| 9' wide Standard canopy door (Garages 10' 6" wide+) | £680 |
| 9' wide Georgian canopy door (Garages 10' 6" wide+) | POA |
| 10' wide Standard framed & retractable door (Garages 12' 6" wide +) | £1,300 |
| 10' wide Georgian framed & retractable door (Garages 12' 6" wide +) | POA |
| 12' wide Standard framed & retractable door (Garages 14' 6" wide +) | £1,400 |
| 12' wide Georgian framed & retractable door (Garages 14' 6" wide +) | POA |
| 14' wide Standard framed & retractable door (Garages 16' 6" wide +) | £1,550 |
| 14' wide Georgian framed & retractable door (Garages 16' 6" wide +) | POA |
| Additional Standard canopy door to the rear (Apex only) (7' wide door) | £450 |
| Additional Standard canopy door to the rear (Apex only) (8' wide door) | £500 |
| Convert up & over door to timber opening doors (solid or glazed) | £200 |
| Exchange up & over door for a timber personal door (workshop) | £200 |

EXTRA HIGH PENT or APEX
7' High To Eaves Garage **+15%**
6' 6" Concrete Panels + 6" Timber Skirt
 Inc 7' Tall Timber doors with 7' high clearance
 or 7' Tall up & over door(s) with 6' 8" clearance

| | |
|--|------|
| Extra fixed one-pane window Double Glazed PVCu (2' x 2') | £120 |
| Extra fixed two-pane window Double Glazed PVCu (4' x 2') | £240 |
| Extra opening one-pane window Double Glazed PVCu (2' x 2') | £135 |
| Extra opening two-pane window Double Glazed PVCu (4' x 2') | £270 |

REMOTE ELECTRIC DOOR SYSTEMS
 For framed & retractable doors only
 For self assembly (supplied with remote)
 For 7' to 14' wide doors **£500**

GARAGE BASES must be flat, level & square. 6" longer & 6" wider than external sizes stated above

Birstall Garden & Leisure Sibson Road Birstall Leicestershire LE4 4DX
 Call (0116) 267 7091 Click www.birstall.com Fax (0116) 267 1318 or visit our showground