



## 6ft 5" (1.96m) Wide Victorian Greenhouse Specification

### Cedar

Alton uses only the finest Western Red Cedar (*Thuja Plicata*) for the framework and cladding sourced entirely from sustainable forests. Famed for its extraordinary durability and resistance to decay, cedar has a low coefficient of expansion, so that it does not shrink, swell or warp excessively, even when subjected to changing degrees of temperature and moisture. The bottom of the greenhouse is boarded with 12mm TG & V cedar matchboard to a height of 732mm. A turned cedar ornamental finial is provided at both ends.

### Finish

The standard greenhouse finish is factory treated, by total immersion in 'Golden Honey' spirit based preservative. Alternatively, the greenhouse can be factory painted with a three coat 'white' or 'green' micro-porous paint system.

### Base kerbs

All models are supplied with 127mm high concrete base kerbs installed onto a flat and level hard standing (base supplied by others). The kerbs help anchor the greenhouse down and elevate the cedar frames above ground level to prolong life. Kerbs will be painted with smooth masonry paint, colour coordinated in brown, white or green dependant on the chosen finish of the greenhouse.

### Glass

All glazing is 3mm toughened safety glass to BS6206 class A. Sections are dry glazed with beading.

### Ventilation

**Roof Vents:** Large double bay roof vents are provided complete with Baylis MK7 automatic openers. Vent aperture size is 720mm x 340mm.

**Side Vents:** The opening lights are top hung and fitted with appropriately finished casement stay and pins. The opening light aperture size is 344mm x 608mm.

### Other

**Door:** The door is of mortice and tenon construction and part boarded with matchboard. The door is hinged on the left with three 100mm hurl hinges and is hung to open inwards. Five lever mortice lock and appropriately finished lever handle furniture is included. A kerbless door way (744mm x 2016mm) is provided for easy access in and out of the greenhouse.

**Rainwater goods:** 76mm half round guttering and a 68mm pipe with shoe, to both sides of the greenhouse. Colour coordinated dependant on finish.

**Staging** (optional): Superior strength staging, 520mm deep, consisting of 19mm x 68mm cedar slats on 19mm x 44mm redwood transverse bearers.

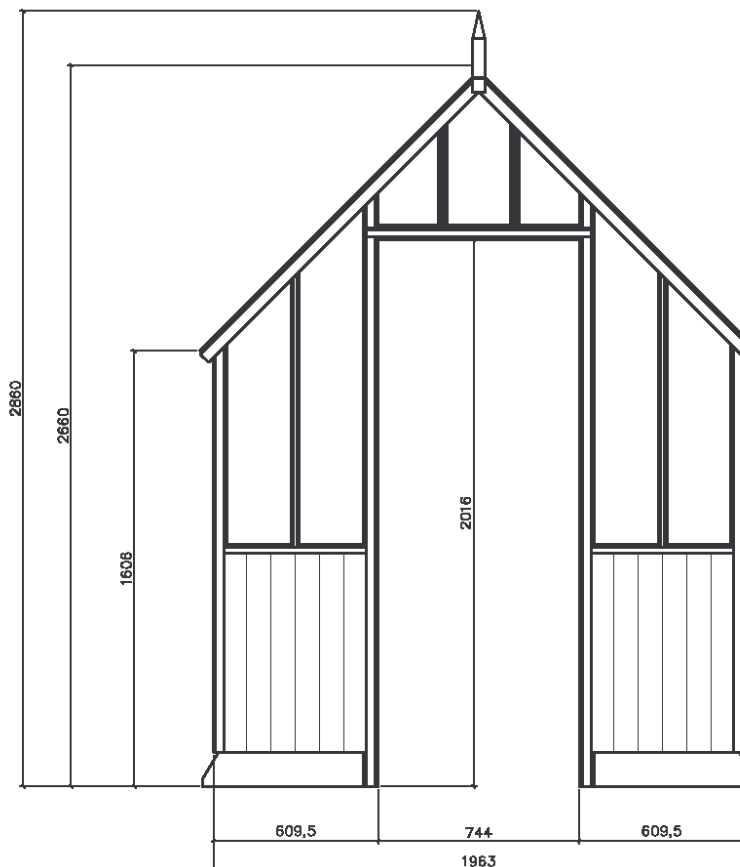
**Shelving** (optional): Superior strength shelving, 300mm deep, consisting of 19mm x 68mm cedar slats on 19mm x 32mm redwood transverse bearers.

**Fixtures & Fittings:** Brown rainwater goods and brass furniture are fitted to standard 'Golden Honey' finished greenhouses; White rainwater goods and brass furniture are fitted to white finished greenhouses; Black rainwater goods and brass furniture are fitted to green finished greenhouses.

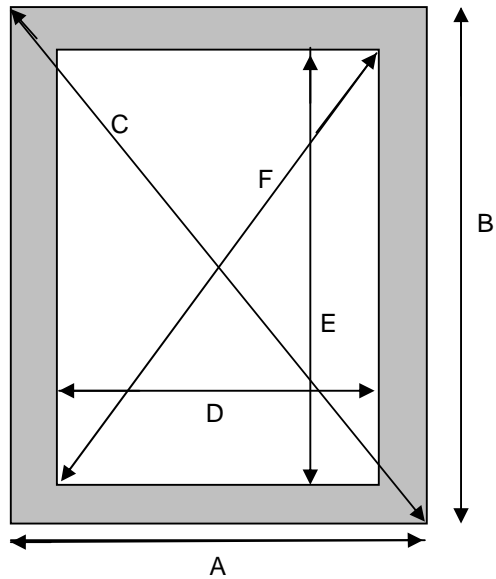
### Size range

**Roof Pitch:** 45 degrees. **Eaves Height:** 1606mm (5' 0 1/4") **Ridge Height:** 2660mm (8' 8 3/4")

Lengths:	1625mm (5' 4")	2410mm (7' 11")	3162mm (10' 4 1/2")	3947mm (12' 11 1/2")	4699mm (15' 5")	5484mm (17' 11 7/8")	6236mm (20' 5 1/2")
<b>Automatic Roof Vents:</b>	2	2	4	4	6	6	8
<b>Side Vents:</b>	2	2	4	4	6	6	8



6'5" Alton Victorian greenhouse prepared base requirement. Helpline 0800 085 0005



	Minimum External Dimensions			Maximum Internal Dimensions		
	width (A)	length (B)	diag (C)	width (D)	length (E)	diag (F)
x 5	2032	1619	2598	1778	1448	2293
x 8	2032	2404	3148	1778	2233	2854
x 10	2032	3156	3754	1778	2984	3474
x 13	2032	3941	4434	1778	3769	4167
x 15	2032	4693	5114	1778	4521	4858
x 18	2032	5478	5843	1778	5306	5596
x 20	2032	6230	6553	1778	6058	6314

In order for us to install the building that you have ordered we will need a level base for it to be sited on. This may be an area where the whole footprint of the building is slabbed or concreted in which case you only need to use the external dimensions above as a minimum area to cover.

If you are wishing to make growing beds within the greenhouse then you will need to construct a ring beam of concrete or slabs using both the tables above.

Whichever method you utilise you should construct the base to a standard appropriate for the ground conditions in your garden to minimise the risk of building movement.



## 7ft 7<sup>3</sup>/<sub>4</sub>" (2.33m) Wide Victorian Greenhouse Specification

### Cedar

Alton uses only the finest Western Red Cedar (*Thuja Plicata*) for the framework and cladding sourced entirely from sustainable forests. Famed for its extraordinary durability and resistance to decay, cedar has a low coefficient of expansion, so that it does not shrink, swell or warp excessively, even when subjected to changing degrees of temperature and moisture. The bottom of the greenhouse is boarded with 12mm TG & V cedar matchboard to a height of 732mm. A turned cedar ornamental finial is provided at both ends.

### Finish

The standard greenhouse finish is factory treated, by total immersion in 'Golden Honey' spirit based preservative. Alternatively, the greenhouse can be factory painted with a three coat 'white' or 'green' microporous paint system.

### Base kerbs

All models are supplied with 127mm high concrete base kerbs installed onto a flat and level hard standing (base supplied by others). The kerbs help anchor the greenhouse down and elevate the cedar frames above ground level to prolong life. Kerbs will be painted with smooth masonry paint, colour coordinated in brown, white or green dependant on the chosen finish of the greenhouse.

### Glass

All glazing is 3mm toughened safety glass to BS6206 class A. Sections are dry glazed with beading.

### Ventilation

**Roof Vents:** Large double bay roof vents are provided complete with Baylis MK7 automatic openers. Vent aperture size is 720mm x 587mm.

**Side Vents:** The opening lights are top hung and fitted with appropriately finished casement stay and pins. The opening light aperture size is 344mm x 608mm.

### Other

**Door:** The door is of mortice and tenon construction and part boarded with matchboard. The door is hinged on the left with three 100mm hurl hinges and is hung to open inwards. Five lever mortice lock and appropriately finished lever handle furniture is included. A kerbless door way (744mm x 2016mm) is provided for easy access in and out of the greenhouse.

**Rainwater goods:** 76mm half round guttering and a 68mm pipe with shoe, to both sides of the greenhouse. Colour coordinated dependant on finish.

**Staging** (optional): Superior strength staging, 700mm deep, consisting of 19mm x 68mm cedar slats on 19mm x 44mm redwood transverse bearers.

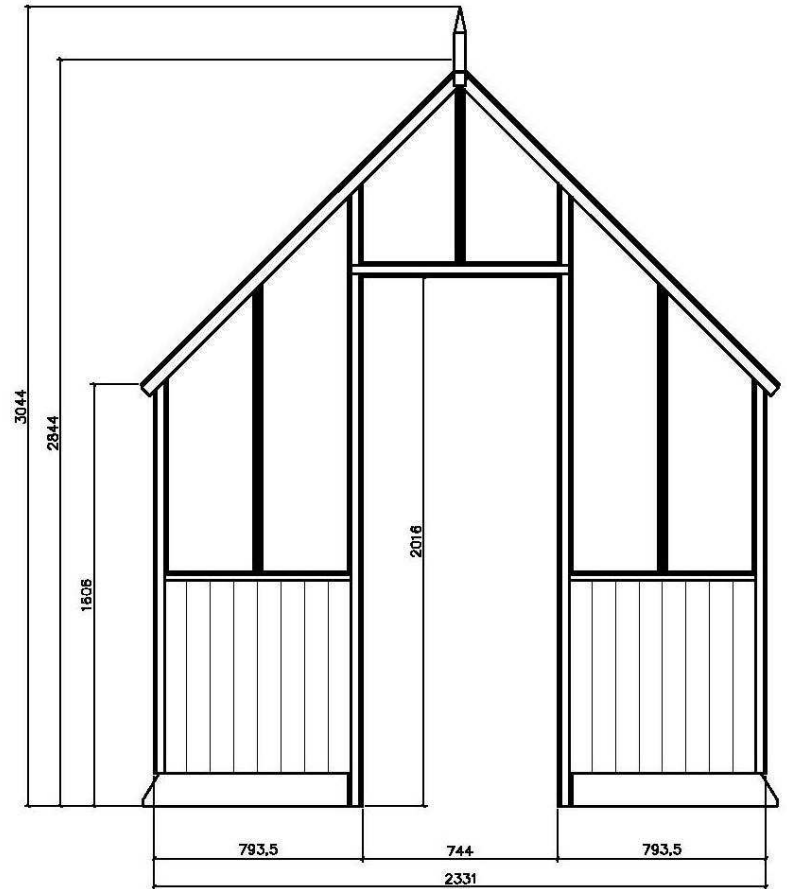
**Shelving** (optional): Superior strength shelving, 300mm deep, consisting of 19mm x 68mm cedar slats on 19mm x 32mm redwood transverse bearers.

**Fixtures & Fittings:** Brown rainwater goods and brass furniture are fitted to standard 'Golden Honey' finished greenhouses; White rainwater goods and brass furniture are fitted to white finished greenhouses; Black rainwater goods and brass furniture are fitted to green finished greenhouses.

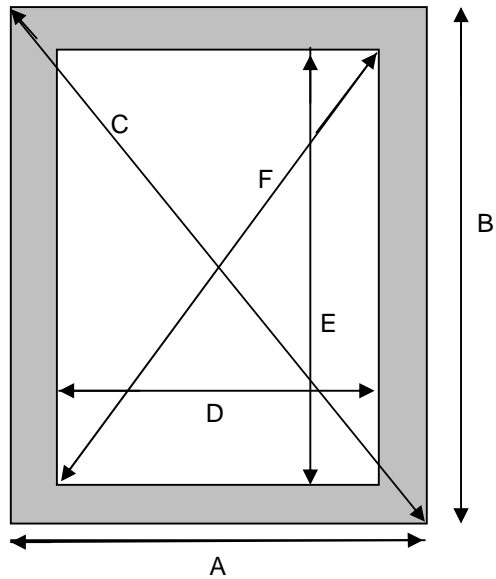
### Size range

**Roof Pitch:** 45 degrees. **Eaves Height:** 1606mm (5' 0<sup>1</sup>/<sub>4</sub>" ) **Ridge Height:** 2844mm (9' 4")

Lengths:	1625mm (5' 4")	2410mm (7' 11")	3162mm (10'4 1/2")	3947mm (12' 11 1/2")	4699mm (15' 5")	5484mm (17' 11 7/8")	6236mm (20' 5 1/2")
<b>Automatic Roof Vents:</b>	2	2	4	4	6	6	8
<b>Side Vents:</b>	2	2	4	4	6	6	8



7'7" Alton Victorian greenhouse prepared base requirement. Helpline 0800 085 0005



	Minimum External Dimensions			Maximum Internal Dimensions		
	width (A)	length (B)	diag (C)	width (D)	length (E)	diag (F)
x 5	2400	1619	2895	2146	1448	2589
x 8	2400	2404	3397	2146	2233	3097
x 10	2400	3156	3965	2146	2984	3676
x 13	2400	3941	4614	2146	3769	4337
x 15	2400	4693	5271	2146	4521	5004
x 18	2400	5478	5981	2146	5306	5724
x 20	2400	6230	6676	2146	6058	6427

In order for us to install the building that you have ordered we will need a level base for it to be sited on. This may be an area where the whole footprint of the building is slabbed or concreted in which case you only need to use the external dimensions above as a minimum area to cover.

If you are wishing to make growing beds within the greenhouse then you will need to construct a ring beam of concrete or slabs using both the tables above.

Whichever method you utilise you should construct the base to a standard appropriate for the ground conditions in your garden to minimise the risk of building movement.



## 10ft 0½” (3.06m) Wide Victorian Greenhouse Specification

### Cedar

Alton uses only the finest Western Red Cedar (*Thuja Plicata*) for the framework and cladding sourced entirely from sustainable forests. Famed for its extraordinary durability and resistance to decay, cedar has a low coefficient of expansion, so that it does not shrink, swell or warp excessively, even when subjected to changing degrees of temperature and moisture. The bottom of the greenhouse is boarded with 12mm TG & V cedar matchboard to a height of 732mm. A turned cedar ornamental finial is provided at both ends.

### Finish

The standard greenhouse finish is factory treated, by total immersion in ‘Golden Honey’ spirit based preservative. Alternatively, the greenhouse can be factory painted with a three coat ‘white’ or ‘green’ microporous paint system.

### Base kerbs

All models are supplied with 127mm high concrete base kerbs installed onto a flat and level hard standing (base supplied by others). The kerbs help anchor the greenhouse down and elevate the cedar frames above ground level to prolong life. Kerbs will be painted with smooth masonry paint, colour coordinated in brown, white or green dependant on the chosen finish of the greenhouse.

### Glass

All glazing is 3mm toughened safety glass to BS6206 class A. Sections are dry glazed with beading.

### Ventilation

**Roof Vents:** Large double bay roof vents are provided complete with Baylis MK7 automatic openers. Vent aperture size is 720mm x 587mm.

**Side Vents:** The opening lights are top hung and fitted with appropriately finished casement stay and pins. The opening light aperture size is 344mm x 608mm.

### Other

**Door:** The door is of mortice and tenon construction and part boarded with matchboard. The door is hinged on the left with three 100mm hurl hinges and is hung to open inwards. Five lever mortice lock and appropriately finished lever handle furniture is included. A kerbless door way (744mm x 2016mm) is provided for easy access in and out of the greenhouse.

**Rainwater goods:** 76mm half round guttering and a 68mm pipe with shoe, to both sides of the greenhouse. Colour coordinated dependant on finish.

**Staging** (optional): Superior strength staging, 908mm deep, consisting of 19mm x 68mm cedar slats on 19mm x 44mm redwood transverse bearers.

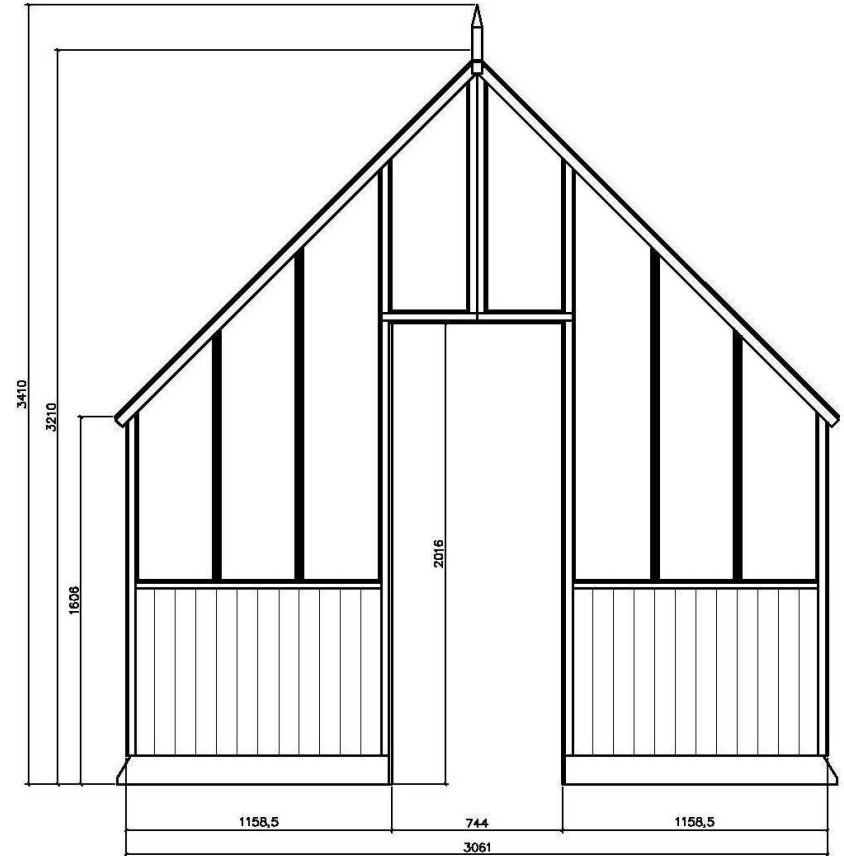
**Shelving** (optional): Superior strength shelving, 300mm deep, consisting of 19mm x 68mm cedar slats on 19mm x 32mm redwood transverse bearers.

**Fixtures & Fittings:** Brown rainwater goods and brass furniture are fitted to standard ‘Golden Honey’ finished greenhouses; White rainwater goods and brass furniture are fitted to white finished greenhouses; Black rainwater goods and brass furniture are fitted to green finished greenhouses.

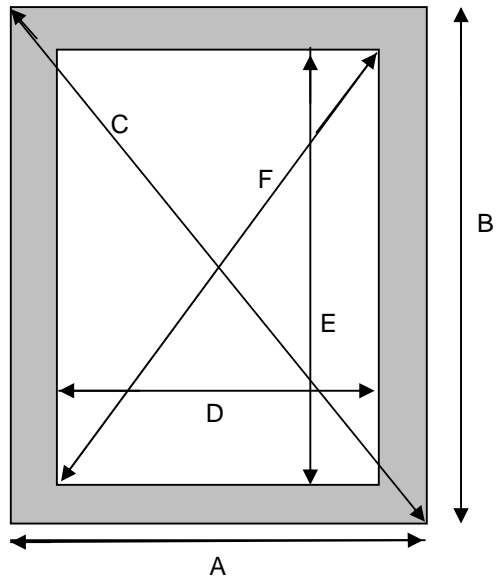
### Size range

**Roof Pitch:** 45 degrees. **Eaves Height:** 1606mm (5’ 0¼”) **Ridge Height:** 3210mm (10’ 6 3/8”)

Lengths:	1625mm (5’ 4”)	2410mm (7’ 11”)	3162mm (10’ 4 1/2”)	3947mm (12’ 11 1/2”)	4699mm (15’ 5”)	5484mm (17’ 11 7/8”)	6236mm (20’ 5 1/2”)
<b>Automatic Roof Vents:</b>	2	2	4	4	6	6	8
<b>Side Vents:</b>	2	2	4	4	6	6	8



10' Alton Victorian greenhouse prepared base requirement. Helpline 0800 085 0005



	Minimum External Dimensions			Maximum Internal Dimensions		
	width (A)	length (B)	diag (C)	width (D)	length (E)	diag (F)
x 5	3130	1619	3524	2876	1448	3220
x 8	3130	2404	3947	2876	2233	3641
x 10	3130	3156	4445	2876	2984	4144
x 13	3130	3941	5033	2876	3769	4741
x 15	3130	4693	5641	2876	4521	5358
x 18	3130	5478	6309	2876	5306	6035
x 20	3130	6230	6972	2876	6058	6706

In order for us to install the building that you have ordered we will need a level base for it to be sited on. This may be an area where the whole footprint of the building is slabbed or concreted in which case you only need to use the external dimensions above as a minimum area to cover.

If you are wishing to make growing beds within the greenhouse then you will need to construct a ring beam of concrete or slabs using both the tables above.

Whichever method you utilise you should construct the base to a standard appropriate for the ground conditions in your garden to minimise the risk of building movement.